

SWINDON TOWN

FOOTBALL CLUB

official programme



1/-

First-hand

Lively

Reports

Complete

Comprehensive

Coverage

Close-up Action

Shots

Every Game

At home or away

The Evening Advertiser

has it covered

M^cILROYS

*the Department Store
with that something extra*

Service!

Free

DELIVERIES
ESTIMATES ON CARPETS & CURTAINS
CARPET FITTING

WILLIAM McILROY (Swindon) LTD.

Tel. 5294



SWINDON TOWN FOOTBALL COMPANY LIMITED

Registered Office: COUNTY GROUND, SWINDON

President: Mr. W. J. CASTLE

Vice-President: Mr. J. DAVIES

Directors:

Chairman: Mr. H. E. LANE

Vice-Chairman: Mr. R. FRICKER

Messrs. F. L. COLLINGS, A. W. DONE, M. EARLE, C. J. GREEN, F. PLYER,
H. WILLIAMS, K. H. WILMER and Dr. J. NICHOLAS

General Manager: Mr. R. A. MORSE

Team Manager: Mr. F. FORD

SATURDAY, 31st JANUARY, 1970

Division II

SWINDON TOWN v BOLTON

Kick-off 3 p.m.

SWINDON TOWN	BOLTON W.	OFFICIALS
1 Downsborough	1 Boswell	REFEREE:
2 Thomas	2 Ritson	Mr. G. Hartley
3 Trollope	3 Marsh	(Wakefield)
4 Butler	4 Greaves	
5 Burrows	5 Hulme	
6 Harland	6 Rimmer	
7 Smith	7 Wharton	
8 Smart	8 Byrom	LINESMEN:
9 Horsfield	9 Manning	Red Flag:
10 Noble	10 Hunt	Mr. D. H. Cross
11 Rogers	11 Taylor	(Solihull)
12 Jones	12	Yellow Flag:
Colours:	Colours:	Mr. G. M. Hughes
Red and White	White and Blue	(Ross-on-Wye)

G. A. Streetly

Tobacconist and Confectioner

**10 BOURNE ROAD
MOREDON SWINDON
Telephone 4956**

C. Goodenough and Sons

Removal and Storage Contractors
any distance

**25 Cricklade Street Swindon
Telephone 4555 and 3855**

CECIL GREEN

Artistic Decorations in all its branches

**12 Armstrong Street
Swindon Wilts
Telephone 4593**

W. J. SELWOOD

Telephone Swindon 5884

Saddlery

General Leather Goods Manufactured and
Repaired to Your Individual Requirements

**103 BROAD STREET
SWINDON WILTSHIRE**

Notton's Cafe

COUNTY ROAD

200 yards from Ground

Perfect meals at all times

For High Class
Central Heating, Plumbing
Painting and Decorating
Electrical Installations
and Repairs

**NORTH WILTS
Sanitary and Heating
Co. Ltd.**

**NEWPORT STREET SWINDON
Telephone 5373/4**



THE ALCOHOL FUEL

COATE GARAGE

REPAIRS - OVERHAULS - WELDING
SERVICING - REBORING - TYRES

Props. E. V. & W. H. Mattick
Marlborough Road Swindon

Leese, Ing & Co. Ltd.

Mineral Water and
Squash Manufacturers

**LANSDOWN ROAD SWINDON
Telephone 22744**

Maylott Studios

For Group and Sports Photographs

Official Photographer to
Swindon Town Football Club

**31 Faringdon Road
Telephone 22792**

Always at your service

L. Bibby

For all Types — Rags, Iron and Metal, etc.
Spot Cash Paid. Please Telephone 2101
and our van will call.

**THE PADDOCK ERMIN STREET
STRATTON ST. MARGARET**

news & views

Today we welcome to the County Ground, newcomers in every sense of the word. This is the first occasion we have played Bolton, either in League or Cup football.

Bolton Wanderers — what memories that name conjures up in the minds of older supporters. A wonderful club, with a fine tradition and a great record. Many still look upon this as a Division 1 team, and what Cup fighting qualities they possess. Winners of the coveted trophy four times, and defeated finalist three times. Many will recall the wonderful final of 1953, when Bolton were defeated 4—3 by Blackpool, but quite a number will remember the first Cup Final played at Wembley in 1923. I myself still retain vivid memories of that match. The break through by the crowds and the fantastic scenes, with the pitch black with people at the time of the kick-off. What stands out most, however, was the quiet confidence and lack of nerves displayed by Bolton. Spectators were massed right to the outside lines of the pitch, and even after the game had started Dick Pym (the goalkeeper obtained from Exeter) was helping to move the crowd back from the bye-line. I well remember Ted Vizard, outside-left (later to become manager of Swindon Town), and how he wouldn't attempt to retrieve a ball within three yards of the touchline. What tremendous enthusiasm when David Jack later transferred to the Arsenal), coolly scored after twelve minutes. Poor West Ham never really settled down, the occasion was a little too much for them, although they only lost 0—2. The Bolton team was undoubtedly a great team of experience and talent: Pym; Haworth, Finney; Nuttall, Seddon, Jennings; Butler, Jack, J. R. Smith, J. Smith (a most successful manager of Blackpool), Vizard. Of that team Pym, Nuttall, Seddon, Jennings, Butler, Jack, J. Smith and Vizard all gained International honours.

Bolton repeated their Cup success three seasons later in 1926 with almost the identical team. Just one change, Greenhalgh replacing Finney at left-back.

Today their team contains a fine international player who has won many honours for England, namely Roger Hunt (a player's man), but whilst he was on the books of Liverpool. A great player and a great sportsman. He might easily have joined Swindon Town when stationed in the Army Pay Corp at Devizes.

Bolton Wanderers, known as the "Trotters", was founded in 1874, and was one of the original members of the Football League founded in 1888. It has always played at Burnden Park. Ground capacity, 70,000.

The present manager, Mr. Nat Lofthouse, scored the two goals by which Bolton defeated Manchester United in the 1958 Cup Final. He will no doubt be hoping for a good result today as Bolton occupy fifteenth position in the League table, having gained 24 points from 28 games. Swindon, with 32 points from 28 games, is in sixth position. Division 2 is very open, with more than half the clubs still in with a chance of promotion.

THE GREAT WESTERN HOTEL

(OPPOSITE SWINDON RAILWAY STATION)

The business man's hotel with a top class
steak bar too!

Specialists in
LUNCHEONS and DINNERS
WEDDING PARTIES and RECEPTIONS
good food — quick service

J. ARKELL and SONS LIMITED Telephone SWINDON 22047

Mills and Merricks Limited

16-17 Bridge Street Swindon

Telephone 5365/6

"HOME OR AWAY"

our function is to ensure that your home is
tastefully and economically furnished

SWINDON'S COMPLETE HOUSE FURNISHERS

New City Office Supplies Limited

Office and Stationery Suppliers
to Industry and Commerce
6 Commercial Road Swindon
Telephone Swindon (STD Code 0793) 4605



CLARK BROS. (Swindon) LTD

Building and Civil Engineering Contractors

CONSULT US FOR
BUILDING AND CIVIL ENGINEERING
CONSTRUCTION IN ALL ITS PHASES

STRATTON ROAD

SWINDON

Telephone Swindon 27261



Going by Car?

SHEFFIELD UNITED

Saturday, 9th February, 1970

SWINDON to SHEFFIELD . . .

Leave Swindon by the A361 Shrivenham Road via Highworth, Lechlade, and Burford to **Chipping Norton**.

31½ miles

Continue on A361 via Bloxham to **Banbury**.

44 miles

Leave Banbury via South Bar Street and North Bar Street on the Southam Road (A423) follow signs to Rugby via Southam, Dunchurch (A426) continue to **Rugby**.

69 miles

Continue on (A426) and leave Rugby via Newbold Road to Gibbet Hill roundabout, after roundabout at junction take A4114 and turn right for the **M1**.

76½ miles

Follow signs "Leicester M1" until after Leicester Forest Service Area, then signs "Nottingham and North M1".

Continue along M1 until Intersection (31) then take the **A57**.

146½ miles

Continue on the A57 following signs "Sheffield, (Handsworth) A57" at ¾ miles on bear left and ¾ miles further keep right then left. Cross Sheffield ring road. Continue until junction with Granville Road, cross over Queens Road at roundabout, keep left into St. Mary's Road then turn left into **Bramall Lane**.

155½ miles

Route kindly supplied by R.A.C.



Face in the crowd – is it you?



In all future editions of this Season's programme we shall publish a photograph of a small section of the crowd at a previous match, one member of which will be clearly indicated by means of a circle. This person will be entitled to a free seat at the next match on producing the programme at the office.

WE AIM TO PLEASE — TRY US

Tunleys

(1)

Glass (2)

Wallpaper (3)

Paint (4)

Polishes (5)

Artist Materials (6)

Prints (7) Ladders (8) Mirrors (9) Brushes (10) Aladdin Heaters (11)

MEMBERS OF THE



12/13 Gloucester Street Swindon Wiltshire



throughout the West

you will find Bradley Estates beautifully situated to meet the requirements of modern living. If you are thinking about a new home and would like to receive full details of our current and planned estates write now to 74 Victoria Road Swindon Wiltshire. Please send me details of

- ☐ Green Meadow Estate, Swindon, Wiltshire
- ☐ Nythe Estate, Swindon, Wiltshire
- ☐ Monkton Park Estate, Chippenham, Wiltshire
- ☐ Park Hill Estate, Frome, Somerset
- ☐ Damory Down Estate, Blandford Forum, Dorset
- ☐ Harkwood Farm Estate, Poole, Dorset
- ☐ Roman Way Estate, Bourton-on-the-Water, Gloucestershire

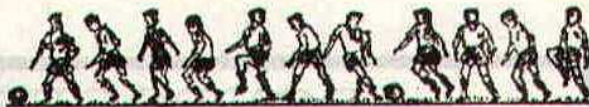
Name.....

Address.....



BRADLEYESTATES

our visitors



BOLTON WANDERERS F.C.

Pen Pictures 1969/70

ALAN BOSWELL

Goalkeeper signed from Wolverhampton Wanderers in November 1969. Already he has proved a more than capable replacement for former England star Eddie Hopkinson. Has had spells with Walsall and Shrewsbury.

JOHN RITSON

A 20-year-old defender who joined Bolton from school and came into the senior side last season. Slimly built with a fair turn of speed he forms, with Paul Hallows, one of the youngest full-back pairings in the Division.

PAUL HALLOWS

Born in Chester and signed by Bolton on apprentice forms in 1965. Signed full-time in 1967 and made his first-team debut last season. Originally a centre-forward he has converted into a fine defender and became a regular this season when Syd Farrimond was unable to start the season.

WARWICK RIMMER

Born Birkenhead and a former English Schools International, Warwick is a former club skipper who is at home in midfield. A versatile player and a first-class club man who has been at Bolton for 13 seasons.

CHARLIE HURLEY

A six feet tall International centre-half signed during the close season from Sunderland, where he spent eleven years. Began his career at Millwall and has brought experience and a cool head to the Wanderers' defence.

ARTHUR MARSH

Just 21 years of age, Arthur joined Bolton as an amateur from his home town of Dudley. Settled this season at left-half and is one of this season's successes.

TERRY WHARTON

A Bolton born winger who cost Wanderers £70,000 when he was brought home from Wolverhampton Wanderers. A clever ball player with a fine turn of speed he is having his best season since joining Bolton.

JOHN BYROM

Currently the country's leading goalscorer, inside-right Byrom joined Bolton from Blackburn Rovers for £30,000 in 1966. A clever, dangerous and hard-working player who packs a useful shot.

JOHN MANNING

A Liverpool born forward who was signed from Norwich City last season. A strong running player who is difficult to move off the ball. A prolific goalscorer, especially dangerous in the air, John has had bad luck with injury since joining Bolton.

ROGER HUNT

The former Liverpool and England star needs no introduction to soccer fans. He cost Bolton over £30,000 when he signed for them just before Christmas. Record goalscorer for Liverpool he holds 34 England caps and a 1966 World Cup Winners Medal. With Byrom and Manning he now forms one of the most dangerous goal hungry trios in the four Divisions.

DON ROGERS SPORTS
29 FARINGDON ROAD SWINDON

Telephone 27378

Main suppliers to Swindon Town Football Club

Stockists of

All leading makes of Football Boots and Clothing
Table Tennis, Badminton, Rugby and Hockey equipment
IN FACT THE COMPLETE SPORTS OUTFITTER

RIMES of SWINDON

POPULAR EXCURSION TO

Fare

adult child

Mon., 9th February, 1970 SHEFFIELD

Dept. 12.30 p.m. 27/6 9/-

SERVICE DIRECT TO THE GROUND
ALL SEATS NUMBERED AND RESERVED

Book now at

102 Commercial Rd., Swindon **46 Cricklade St., Cirencester**
Telephone 27113 Telephone 3479

or with any of Rimes Booking Agents

Dobell Shearman & Co. Ltd.

HIGH STREET SWINDON

Telephone 4961

FANCY and COMMERCIAL STATIONERS
TYPEWRITERS and OFFICE EQUIPMENT

Greetings Cards for all Occasions
from Leading Art Publishers



W. J. CASTLE

Office and Bakery

4 and 5 MARKET STREET
SWINDON

Telephone 22017

Specialists—

BIRTHDAY CAKES - WEDDING CAKES
DAIRY CREAM - PASTRIES
BUNS - ROLLS - SPONGES



OUR VISITORS (continued)

ROY GREAVES

A 21-year-old local boy who signed for the Club as an amateur. His fine ball control and strong running has made him a regular and popular first-team player. He has settled into the midfield position since the departure of Freddie Hill to Halifax during the close season. Roy has been Bolton's leading scorer for the last two seasons.

NAT LOFTHOUSE

One of the greatest centre-forwards the game has known, Nat became Manager of Bolton Wanderers last season. He has spent more than 30 years with the one Club and as a player became known as the "Lion of Vienna" after leading England to victory in an international with Austria, at that time the leading European national side.

GORDON TAYLOR

A fast, tricky and hard-shooting winger. He joined Bolton from School and has continued his studies in his spare time to gain a Bachelor of Science Degree just before the start of the season. Bolton fans love to see Gordon in full cry. He helped to make Wyn Davies one of the most feared centre-forwards in the game.

GARETH WILLIAMS

Signed by Bolton from Cardiff City in October 1967 for a £60,000 fee. An attacking half-back with a powerful shot he has had difficulty in commanding a regular first-team place this season.

JOHN HULME

A six feet tall centre-half with a strong tackle. Hulme is another player who joined Bolton on leaving school in 1960 and graduated through the junior ranks. First choice centre-half for the past two seasons until the arrival of Charlie Hurley.

F.A. Cup – Fifth Round

SWINDON TOWN v. SCUNTHORPE UNITED

SATURDAY, 7th FEBRUARY, 1970

'A' Season Ticket holders are informed that they must claim their tickets for this game not later than 5 p.m. on Wednesday, February 4th.

Persons holding 'B' issue Season Tickets are informed that a limited number of Ringside seats will be available for them, but since the number of these seats is less than the number of 'B' issue ticket holders, these will be sold on a first-come first served basis, so long as they are available.

Division I I

Fixture List

1969

August

9 Blackburn Rovers	(A) 0—2
13 Cardiff City	(A) 2—2
16 Carlisle United	(H) 2—2
19 Cardiff City	(H) 2—1
23 Aston Villa	(A) 2—0
30 Charlton Athletic	(H) 5—0

September

2 League Cup (2) Swansea	(A) 3—1
6 Blackpool	(A) 2—3
13 Oxford United	(H) 0—0
16 Middlesbrough	(A) 0—0
20 Queen's Park Rangers	(A) 0—2
24 League Cup (3) Oxford	(A) 0—1
27 Leicester City	(H) 1—1
30 Millwall	(H) 2—1

October

4 Bolton Wanderers	(A) 1—0
7 Carlisle United	(A) 2—2
11 Sheffield United	(H) 2—1
18 Hull City	(H) 1—0
25 Portsmouth	(A) 1—3

November

1 Norwich City	(H) 2—0
8 Birmingham City	(A) 0—2
15 Watford	(A) 0—0
22 Huddersfield Town	(H) 2—1
29 Preston North End	(A) 1—3

December

6 Bristol City	(H) 1—1
13 Oxford United	(A) 0—0
20 Blackpool	(H) P
26 Aston Villa	(H) 1—1
27 Charlton Athletic	(A) 1—1

1970

January

3 F.A. Cup Blackburn	4—0
10 Queen's Park Rangers	(H) 0—0
17 Leicester City	(A) 2—0
24 F.A. Cup (4) Chester	(H) 4—2
31 Bolton Wanderers	(H)

February

7 F.A. Cup (5) Scunthorpe	(H)
9 Sheffield United	(A)
14 Blackburn Rovers	(H)
21 Portsmouth	(H)
28 Hull City	(A)

March

7 Huddersfield Town	(A)
14 Preston North End	(H)
21 Bristol City	(A)
28 Watford	(H)
30 Norwich City	(A)
31 Birmingham City	(H)

April

4 Millwall	(A)
14 Middlesbrough	(H)

Appearances

Name	Div. II	League Cup	F.A. Cup	Cup Winners Cup
Downsborough	28	2	2	2
Thomas	28	2	2	2
Trollope	28	2	2	2
Butler	28	2	2	2
Burrows	27	2	2	1
Harland	28	2	2	2
Smith	14 (1)	2	2	2
Horsfield	27	2	2	2
Smart	28	2	2	2
Noble	25	2	1	2
Rogers	22	2	2	2
Jones	8 (5)		1	(1)
Blick	1 (4)			1
Heath	15 (1)			
Down	(1)			
Penman	1		(1)	

(Playing as substitute in brackets)

Goalscorers

Name	Div. II	League Cup	F.A. Cup	Cup Winners Cup
Horsfield	11		3	3
Noble	9	3		1
Jones	4		1	1
Rogers	3		1	
Smith	2		1	
Burrows	1			
Trollope	1			
Thomas	1			
Smart	2		1	
Butler			1	
Opponents	1			

League Table – Division II

(up to and including Tuesday, 27th January, 1970)

	P	W	D	L	F	A	P
Huddersfield Town	28	16	7	5	47	27	39
Sheffield United	29	15	5	9	54	25	35
Blackburn Rovers	29	15	5	9	40	34	35
Cardiff City	28	14	6	8	45	28	34
Queen's Park Rangers	29	14	6	9	49	38	34
Swindon Town	28	10	12	6	35	29	32
Middlesbrough	27	13	6	8	36	30	32
Blackpool	27	12	8	7	35	33	32
Leicester City	28	11	9	8	42	38	31
Carlisle United	29	12	7	10	45	41	31
Bristol City	28	10	8	10	34	31	28
Portsmouth	29	9	8	12	43	53	26
Birmingham City	28	9	7	12	39	47	25
Hull City	27	10	4	13	42	36	24
Bolton Wanderers	28	8	8	12	40	44	24
Norwich City	27	10	4	13	26	33	24
Oxford United	27	8	8	11	22	29	24
Millwall	28	7	10	11	33	44	24
Charlton Athletic	28	5	13	10	25	47	23
Preston North End	28	7	7	14	29	39	21
Watford	28	6	7	15	30	36	19
Aston Villa	26	4	9	13	22	41	17

Key of the Board

First Section

- A—Burnley v. West Ham United
- B—Chelsea v. Sunderland
- C—Everton v. Wolverhampton W.
- D—Manchester Utd. v. Derby County
- E—Newcastle Utd. v. Crystal Palace
- F—Nottingham Forest v. Liverpool
- G—Sheffield Wed. v. Ipswich Town
- H—Tottenham Hotspur v. Southampton
- I—Albion v. Manchester City
- J—Birmingham City v. Bristol City
- K—Cardiff City v. Blackpool
- L—Huddersfield Town v. Carlisle Utd.
- M—Hull City v. Sheffield United
- N—Middlesbrough v. Q.P.R.
- O—Millwall v. Oxford United
- P—Norwich City v. Blackburn Rovers
- Q—Portsmouth v. Charlton Athletic
- R—Preston North End v. Aston Villa
- S—Watford v. Leicester City
- T—Bournemouth & B.A. v. Southport

Second Section

- A—Bradford City v. Rotherham Utd.
- B—Bristol Rovers v. Brighton & H.A.
- C—Doncaster Rovers v. Fulham
- D—Gillingham v. Torquay United
- E—Orient v. Tranmere Rovers
- F—Plymouth Argyle v. Mansfield Town
- G—Stockport County v. Luton Town
- H—Walsall v. Reading
- I—Aldershot v. Port Vale
- J—Colchester United v. Newport County
- K—Exeter City v. Lincoln City
- L—Grimsby Town v. Crewe Alexandra
- M—Northampton Town v. Bradford
- N—Peterborough United v. Swansea T.
- O—Southend United v. Wrexham
- P—York City v. Notts County

Forthcoming Matches on This Ground

SATURDAY, 7th FEBRUARY, 1970

F.A. Cup – Fifth Round

SWINDON TOWN v. SCUNTHORPE UNITED

Kick-off 3 p.m.

TUESDAY, 10th FEBRUARY, 1970

Football Combination Cup

SWINDON TOWN v. BRISTOL ROVERS

Kick-off 7.30 p.m.

SATURDAY, 14th FEBRUARY, 1970

Division II

SWINDON TOWN v. BLACKBURN ROVERS

Kick-off 3 p.m.

Previous Matches

F.A. CUP – FOURTH ROUND

SATURDAY, 24th JANUARY, 1970

Beat Chester (Home) 4—2.

Team: Downsborough; Thomas, Trollope; Butler, Burrows, Harland; Smith, Smart, Horsfield, Jones, Rogers.

Scorers: Horsfield (2), Smart, Jones.

Attendance: 21,939.

Referee: Mr. D. J. Lyden (Birmingham)

FOOTBALL COMBINATION CUP

TUESDAY, 27th JANUARY, 1970

Lost to Arsenal (Away) 5—0.

Team: Jones; Dawson, Fry; Desmeules, Blick, Handrick; Heath, Penman, Down, Dangerfield, Porter.

Referee: Mr. G. F. Keep (Catford).

HELLENIC LEAGUE

SATURDAY, 24th JANUARY, 1970

Beat Chipping Norton (Home) 5—0.

Team: Grzadkowski; Allen, Fry; Desmeules, Grubb, Handrick; Bailey, Dangerfield, Moss, Down, Porter.

The man in the middle



GEORGE HARTLEY (Wakefield)

Started his career 15 years ago in Wakefield and District football. He next graduated to the Northern Intermediate League, and then to Central League. Appointed to Football League Linesman List four years ago, and was promoted to the Referee's List last season. A batchelor, he is Area Manager for Slazengers Sports Co. His hobbies include golf, cricket and tennis.

T RUSTEE
S AVINGS
B ANK

93 Commercial Road
Swindon



Facilities include

- CURRENT ACCOUNT SERVICE
- 24 HOUR CASH DISPENSER
- T.S.B. UNIT TRUST
- CONTRACTUAL SAVINGS SCHEME
(giving substantial Tax benefits)

**INTEREST 7% IN THE
SPECIAL INVESTMENT DEPT.**

Hatton's Newsagency

A. J. D. & N. J. Woodhouse

Newsagents :: Tobacconists
Confectioners

Agents for Wessex School of Motoring
Booking Agents for Rimes Coaches

6 REGENT CIRCUS (near G.P.O.)
Telephone Swindon 22731

BRETTS

PET and GARDEN SUPPLIES

32-33 Commercial Road
and
6 Cromwell Street Swindon

THE PORK SHOP

(Swindon Bacon Curing Co. Ltd.)

Specialists in

Bacon - Pork - Cooked Ham

50 FLEET STREET SWINDON
Telephone 22122

J. WILMER

Coal Merchants

St. Margaret's Road Swindon

Telephone 22535

SOUTHERN LAUNDRY CO. LTD.

Launderers and Dry Cleaners

HAYDON STREET SWINDON
Telephone 4161

At Your Service

A. E. LUDLOW LIMITED

Wholesale Fruit and Potato Merchant

**COLBOURNE STREET
SWINDON WILTSHIRE**
Telephone Swindon 3583

We deliver Fresh Fruit, Vegetables
and Potatoes daily—**Wholesale Only**

FOR ALL YOUR ANGLING NEEDS
CONSULT

Frank Woodward

Swindon's Fishing Tackle Specialist

25 HAVELOCK STREET SWINDON
Telephone 3879

For Paints of Good Quality

H. S. Hodges & Sons

(SWINDON) LTD.

Cricklade Road Swindon

Telephone 22422

Dulux, Brolac, Valspar, Wallcharm, etc.

24 hour Delivery
Service -

YOUR COMPLETE JANITORIAL SERVICE

Wilts Cleaning Supply Service

**Kembrey Warehouse Rear 255 Cricklade Road
SWINDON**

Telephone 21012

Represented by G. ALEXANDER
Telephone Swindon 27833

BOLTON WANDERERS F.C.

STATISTICS

Ground: Burnden Park. Dimension of pitch: 112 yards by 76 yards. Colours: White shirts, blue shorts, white stockings. Change colours: Red shirts, red shorts, red stockings. Nearest railway station: Trinity Street, Bolton. Ground capacity: 60,136. Number of seats: 8,239.

HISTORY

In 1953 Bolton Wanderers, the famed "Trotters", who were among the League's twelve founder clubs, made their seventh F.A. Cup Final appearance and won the trophy for the fourth time. When relegated six years later they had spent all but two of the previous 40 seasons in the First Division.

Their subsequent struggle to cope with financial burdens, and lack of success, is one of the tragedies of grim, sink-or-swim modern football.

This is Bolton's sixth Second Division season, three times longer than any of the previous spells, which altogether comprised only seven seasons, hence the bitterness over their present plight. In those seven years the Wanderers' final positions were 2, 7, 2, 1, 2, 3, 2.

They left no doubt about Bolton's rightful place, even though the Club never succeeded in winning the League Championship. Their best attempts ended with the Wanderers three times third, and four times fourth. Rarely, however, had they a season comparable with 1902-03 when 23 of 24 matches were lost and only 10 points gained. Their best in that period was 36 of 52 points in 1891-92 and, 33 years later, 55 out of 84.

Bolton originated in 1874 from a Sunday School team and for three years were known as Christ Church. Their eventual home, Burnden Park, has held nearly 70,000 spectators.

Their proud record of 58 First Division seasons is inferior only to Everton's 66, Aston Villa's 65 and Sunderland's 62. In the F.A. Cup Wanderers also have a distinguished record as winners four times, finalists seven times and semi-finalists 12 times.

Starting with the first Final at Wembley in 1923 they beat West Ham 2-0; Manchester City 1-0 (1926 — and revenge for 0-1 in 1904); Portsmouth 2-0 (1929); and Manchester United 2-0 (1958). Thus they can boast a clean sheet at the Stadium, each time they won the trophy, but not in 1953.

Their other two Finals resulted: 1-4, v. Notts County (1894); 3-4, v. Blackpool (1953). Ironically their renowned scoring inside-left Joe Smith, Bolton's individual goals record holder with 38, was Blackpool's manager when they vanquished his old club in what became known as the Stanley Matthews Final — despite "Morty's" hat trick!

Wanderers have never won the League Championship. Three times third, their best season was 1924-25 — 55 points after a bad start. A poor away record was offset by 17 consecutive home wins and 61 goals at Burnden.

OUTSTANDING PLAYERS OF BURNDEN PARK

Joe Smith, of the cannonball "daisycutter", joined Stockport after loyally serving Wanderers 1908-27, and banged in another 38 goals in his twentieth League season. What a marksman!

David Jack became the first £10,000 transfer (actual figure £10,340) when signed by Arsenal to work in sweet harmony with Hulme, Lambert, Alex James and "Boy" Bastin.

"Ted" Vizard, elegant Welsh wizard winger No. 2 after the immortal Meredith, gave Bolton 21 years distinguished service.

Tall, iron-man Jimmy Seddon was fearless and peerless as a centre-half.

Young and old always had their heroes at spacious Burnden (record crowd 69,912 in 1923) starting with famed goalkeeper J. W. Sutcliffe, whose first love was rugby. Albert Shepherd, terror of goalkeepers, and Alec Donaldson, delightful wing artistes, are fondly remembered, too.

Lastly, one must not forget the builder of those Cup teams, benign secretary-manager Charlie Foweraker, who had served 50 years when he retired in 1945.

HARRY LUNN

(Ex NOTTS COUNTY, PORTSMOUTH and SWINDON TOWN F.C.)

Fish Bar and Restaurant

27-28 COMMERCIAL ROAD SWINDON

RESTAURANT open 9 a.m. to 10 p.m. for

Snacks - Lunches - High Teas - Evening Meal

FISH BAR open Mid-day and Evenings until 11 p.m.

HULFORD MOTORS LIMITED

SELF DRIVE HIRE

Fleet of 1969/8 Fords Escorts De-Luxe
Cortinas De-Luxe Cortinas 1600 Estate
(Bench Seat Column Change) — Zephyr V4s

SHRIVENHAM ROAD

(200 yards from Football Ground)

Telephone 4934

Large Car Park Available

COWLEY BROS. (Wroughton) LTD.

**BUILDERS OF MODERN ATTRACTIVE
HOUSES and BUNGALOWS**

SWINDON

Developments at
WROUGHTON

BADBURY

Office

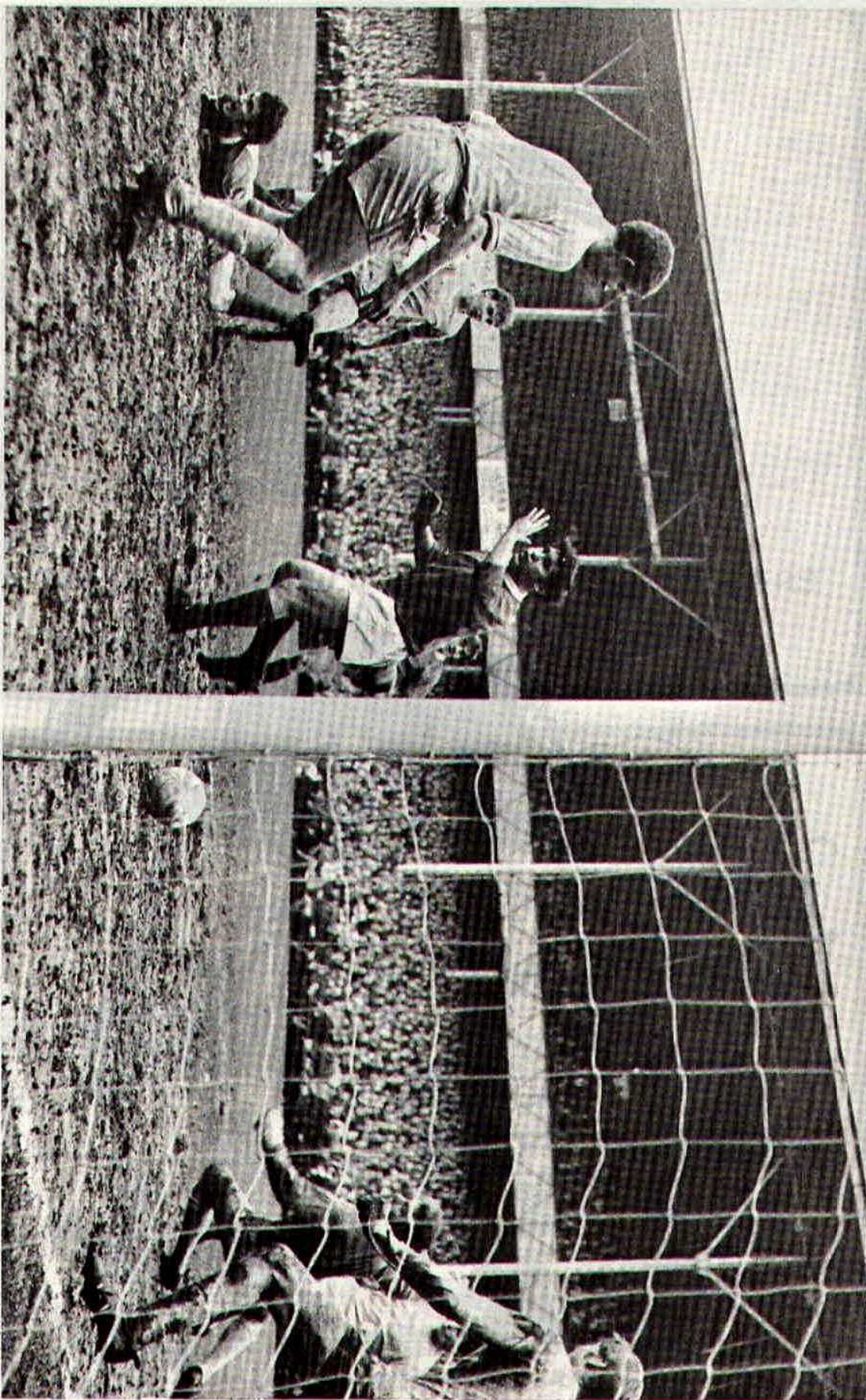
**28 NEWPORT STREET
SWINDON**

Telephone Swindon 6870

Reserved for British Rail



Inter-City



Chris Jones scoring Swindon's second goal against Chester in the 4th Round of the F.A. Cup.

Photograph by R. Marsh.



Chris Jones scoring Emerson's second goal against Chelsea in the 4th round of the F.A. Cup.

Suppliers to the Swindon Team
MAY WE SUPPLY YOU?



EARLE

of Chippenham Limited

MAIN

FORD

DEALERS

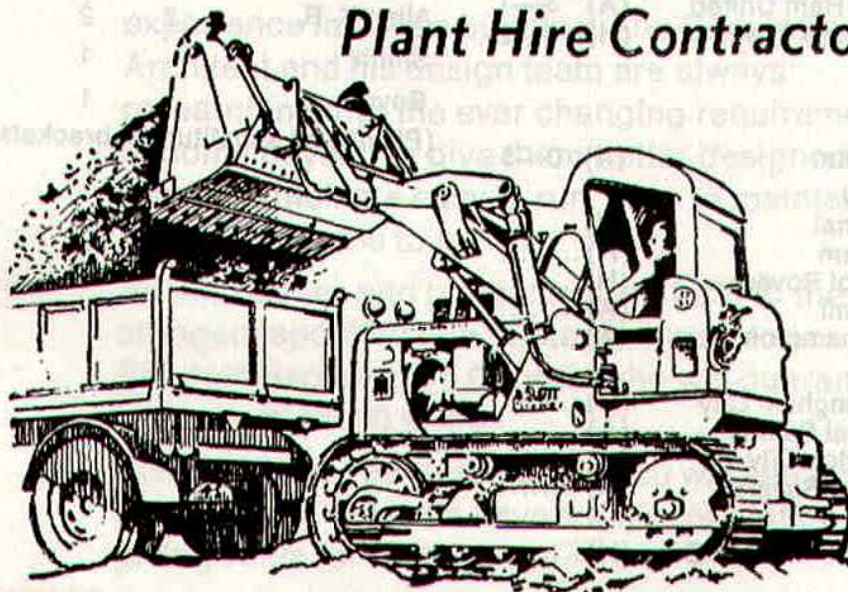
COCKLEBURY ROAD CHIPPENHAM

Telephone 3255

H. HIBBERD LIMITED

FOR YOUR EARTH-MOVING EQUIPMENT

Plant Hire Contractors



40 NEWPORT STREET SWINDON

Telephone Swindon 6125

Football Combination

Fixture List

1969

August

9 Southampton	(H) 2—2
16 Swansea Town	(A) 0—1
23 Queen's Park Rangers	(H) 1—4

September

4 Oxford United	(A) 2—0
6 Bristol City	(H) 1—2
17 Cardiff City	(A) 3—2
20 Arsenal	(H) 1—2
27 Luton Town	(A) 0—2

October

4 Reading	(H) 1—2
7 Bristol Rovers	(A) P
11 Ipswich Town	(A) 1—0
21 Bristol City	(A) 2—7
25 Crystal Palace	(H) 1—0

November

8 Plymouth Argyle	(H) 3—1
15 Crystal Palace	(H) 1—2
22 Swansea Town	(A) 1—1
29 Tottenham Hotspur	(H) 1—4

December

8 Peterborough United	(A) 0—2
13 Leicester City	(H) 0—2
17 Plymouth Argyle	(A) 1—1
20 West Ham United	(A) 3—1
27 Swansea Town	(H) 0—2

1970

January

27 Arsenal	(A) 0—5
------------	---------

February

3 Arsenal	(H)
7 Fulham	(H)
10 Bristol Rovers	(H)
17 Walsall	(A)
24 Northampton	(A)

March

7 Birmingham City	(H)
11 Crystal Palace	(A)
18 Norwich City	(A)
21 Bristol Rovers	(A)

April

4 Bournemouth & B.A.	(H)
----------------------	-----------

Name	Appearances		Goalscorers	
	Foot. Comb.	Foot. Cup	Foot. Comb.	Foot. Cup
Price	1			
Dawson	7	4		
Fry	14	5		
Desmeules	9	3		
Blick	16	6		
Handrick	16	6	1	
Heath	4	1		
Penman	11	2	1	
Down	13	4	6	
Dangerfield	14 (1)	5	10	1
Moss	4	1		1
Bailey	11 (2)	5	1	
Grzadowski	2			
Hubbard	15	5		
Jones (R)	11	4		
Allen (K)	8	3		
Jones (C)	4	2		
Wetson	1	1		1
Claypole	10	2		
Porter	2	3	1	1
Allen K. R.	2	2		
Smith		1		1
Boyd		1		

(Playing as substitute in brackets)

AKERS GARAGE LIMITED

THE STREET MOREDON SWINDON WILTSHIRE

Telephone Swindon 3457/8

main dealer for
VAUXHALL/BEDFORD
and
Parts and Accessories
Sales and Service

Showrooms open
MONDAY to FRIDAY — 8 a.m. to 8 p.m.
SATURDAY — Closed 7 p.m.
SUNDAYS — 10 a.m. to 2 p.m. for Petrol and Viewing



MODERN LIVING IN EXPERIENCED HANDS

Wilson homes are the result of over 60 years experience in house building. The Company Architect and his design team are always researching into the ever changing requirements of home buyers, to give them better designed homes, which are easy to run, easy to maintain and comfortable to live in.



All our houses and bungalows are built to the stringent specification of the National House Builders Registration Council who will guarantee your home for 10 years.

Visit a Wilson Show Home and you will see for yourself why Wilson's have such a reputation in giving value for money.

WILSON

(Swindon) LTD., 90-92 Commercial Road, Swindon Telephone 6361 (3 lines)

seating manufacturers for Stadium Seats Ltd

- * Heavy, medium and light steel fabrication
- * Custom made production line equipment
- * Ancillary work for industry and the building trade

FAST EFFICIENT SERVICE BY



MARTYN LYN SHAW LTD

BOUNDARY WORKS - STRATTON ROAD - SWINDON - WILTS

Telephone 21844

spectator seating in high density polyethylene

- * Supplied to over 36 Football League clubs
- * Any colour. No maintenance
- * Industrial seats for the food, electronics and pharmaceutical industries
- * Largest supplier of spectator and industrial seating in Europe

STADIUM SEATS LTD

STRATTON ROAD - SWINDON - WILTS Telephone 21844